



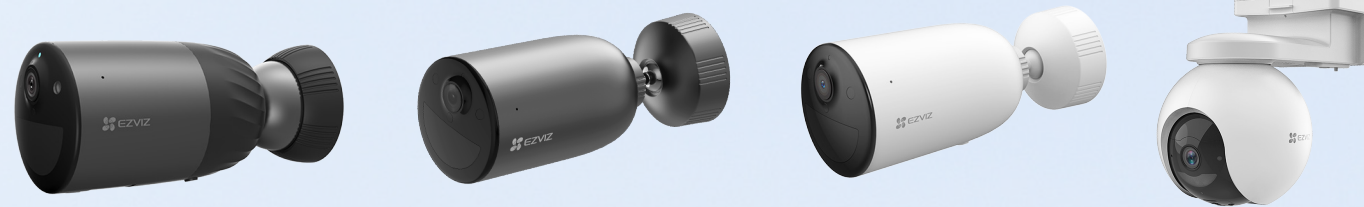
*Solar Panel with Battery Storage*

**24W**

**Effectively transforms,  
stores and uses the  
power of the sun**



*Designed to Charge All EZVIZ  
Outdoor Battery Cameras*



## Key Features

- **Large Built-in Battery Capacity:** As a 75Wh power bank that converts solar energy to charge security cameras, it removes your battery anxiety even if you live in a cloudy region.
- **Double Charging Ports:** It powers two battery cameras at the same time to ensure all-around protection.
- **High-performance Monocrystalline Silicon:** The solar panel uses monocrystalline silicon solar cells to charge your battery cameras at a high efficiency conversion rate of up to 23%<sup>1</sup>.
- **Battery Status Monitoring:** When connected to EZVIZ battery cameras<sup>2</sup> that support Bluetooth communication, the certified solar panel ensures correct power management via EZVIZ App.
- **Weatherproof Design:** Featuring a durable frame and stainless steel screws, the solar panel easily withstands rain, dust, snow and sun.
- **Made to Support Versatile Protection:** When working with EZVIZ battery cameras, it's helpful to reduce limits and reduce human labor in large gardens, farms, camping areas, construction sites, etc.

## 24/7 protection powered by green energy

The solar panel can be a great helper to simplify your use of an EZVIZ outdoor battery camera, as it provides round-the-clock green power to free you from recharging your device. Unlike your ordinary solar panel that stops working on a cloudy day, it stores up to 75Wh power onboard to keep your camera running longer.



Conversion Efficiency

**23%**

Charging Power

**24W**

### Expected Performance

when powering the **EB8 Battery Camera**

Total Battery Capacity

**75Wh+38Wh**

On Solar Panel On EB8 Camera

Total Charging Time<sup>3</sup>

**4.7h**

Estimated Camera Use<sup>4</sup>

**60 hours**

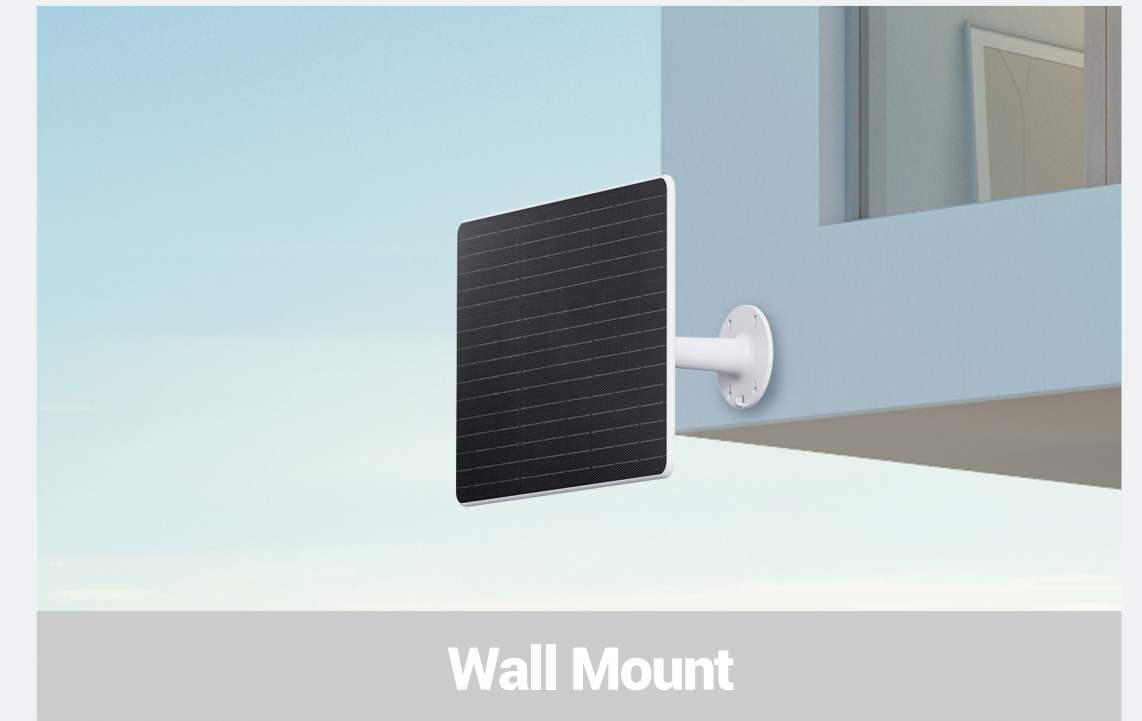
## Dual charging power, double home protection

The solar panel can be connected to two battery-powered cameras and charge them simultaneously. Mount your security camera where you need it, then find a sunny spot to install the solar panel with the included 3-meter-long cables.



## ***Easy and flexible to install***

The adjustable and versatile mounting bracket ensures flexibility in choosing the best location to optimize sun exposure.



## ***Pivotal accessory for the great outdoor***

A perfect companion for the EZVIZ battery cameras that take care of larger areas, the solar panel helps greatly reduce human labor and energy bill.



- 1 Actual charging efficiency may be slightly higher or lower depending on sunlight intensity and other environmental factors.
- 2 Currently only following models support Bluetooth communication: EB3-R200, BC1c-R100, CB5-R100, EB5-R100. The list may grow as EZVIZ launches more products in the future. Please check the compatibility before purchasing.
- 3 The data is calculated when the Solar Panel charges both an EB8 Outdoor Pan & Tilt Battery Camera and itself from zero battery to full battery status, under the condition that no power-consuming camera activities (including detection, video recording, pan and tilt actions, etc.) happen during the charging period. The data collecting process is under STC (Standard Tested Condition): AM=1.5, 25°C, 1000W/m<sup>2</sup>, SMQ.
- 4 The data is calculated when the Solar Panel has fully charged its onboard battery, and powers a fully-charged EB8 Outdoor Pan & Tilt Battery Camera under the condition that the EB8 is set on the always-recording mode. For different camera usage or other battery camera models, the estimate hours of power use may vary.

# Specifications CS-PBC24-R100-20AH

## Performance Parameter

Open Circuit Voltage	18.4V (-5%, +10%)
Short Circuit Current	1.65A (-5%, +10%)
Power Voltage	15.3V (-5%, +10%)
Max Power Current	1.57A (-5%, +10%)
Max. Power	24W
Battery Capacity	75Wh (14.6V 5000mAh) rechargeable battery, battery life varies based on settings, usage & temperature
Interface	One Type-C input port, two USB-A output ports
Transformation Efficiency	23%
IP Grade	IP65

## General

Operation Temperature	-20°C ~ 60°C (-4°F ~ 140°F), humidity 90% or less (non-condensing)
Power Supply	DC 5V/2A
Material	High efficiency monocrystalline silicon cell
Product Dimensions	220.6 × 300 × 440 mm (8.69 × 11.81 × 17.32 inch)
Product Dimension	15 × 11 × 1 mm (0.59 × 0.43 × 0.04 inch)
Packaging Dimensions	480 × 115 × 340 mm (18.90 × 4.53 × 13.38 inch)
Weight	Net weight: 2.1 kg (74.07 oz) With package: 3.06 kg (107.94 oz)

## In the box

- Solar Panel with Battery Storage
- Adjustable Mounting Bracket
- Hex Socket Head Cap Screw
- Drill Template
- Type-C to Micro USB Transformer (×2)
- Mount Bracket (×2)
- Power Cable (×2)
- L-Shaped Wrench
- Screw Kit
- Regulatory Information (×2)
- Quick Start Guide

## Certifications

CE / REACH / WEEE / RoHS

Specifications are subject to change without notice. "🌈", "EZVIZ" and other trademarks and logos are the properties of EZVIZ in various jurisdictions.